



clouds for mountains

ANITA PHILLIPS

PSAS FREMANTLE 2026

clouds for mountains is a body of work inspired by a storm front moving across the Cheela Plains in the Pilbara. Flooded roads kept me confined to camp for a few days, and yet I did not lack for inspiration. I stood on a hilltop painting and drawing as rain moved over the land—large skies, dense clouds, and red earth turning to water and mud. The work focuses on the clouds—their scale uninterrupted in the huge skies of the Pilbara. These clouds, they are stories in themselves... They hold the intensity of the weather, the vastness of the landscape and the quietness of the solitude on that hilltop...

*“Its raining on the plains.
We are forecasted to get an
inch today and another
tomorrow. So after walking
up Lucy;s in the rain I’m
saturated but very very
happy. The grey skies and
the soft colours of the
plains are breath taking...”*
Journal entry, 26th June.





by any

Leaps Levent Monday 5.30pm



Acknowledgement of Country

I respectfully acknowledge the Whadjuk people as the Traditional Owners of the greater Fremantle / Walyalup area – the land on which we gather – and pay our respects to Elders past, present, and emerging. We recognise their role in preserving the beauty, knowledge, and resilience of this Country; respecting its history and the wisdom of those who have cared for it through countless generations.

I also respectfully acknowledge the Traditional Custodians of the land that inspired the *"clouds for mountains"* exhibition: the Innawonga, Banyjima, Puutu Kunti Kurrama, Pinikura (PKKP), and Jurruru peoples. We honour their deep connection to the Pilbara, their enduring care for this ancient landscape, and their ongoing cultural and spiritual ties to the land, waters, and skies.

I pay my respects to Elders past, present, and emerging and recognise their custodianship of the Pilbara's natural and cultural heritage.



"that feeling of weather"

2026, oil and cold wax on canvas,
140x140cm.

Unframed.

\$4400



“Growing up on a farm in the Wheatbelt of WA, you talk weather a lot...it seemed that we were always talking about rain - too much,, too little, when, where and who got rain....

Clouds were always a welcome sight and people were happy when it was raining... maybe thats why clouds and skies feature so strongly in my work”



"today, storm clouds and red dirt"
2026, oil on canvas,
160x70cm.
Unframed
\$3600



"a kindness of clouds"
2026, oil and cold wax on linen,
160x85cm.
Unframed
\$3800.



"clouds to remember"
2026, oil on canvas, 160x70cm.
Unframed
\$3600



Detail

"this cloud and I..."
2026, oil on canvas, 120x120cm.
Unframed.
\$3800

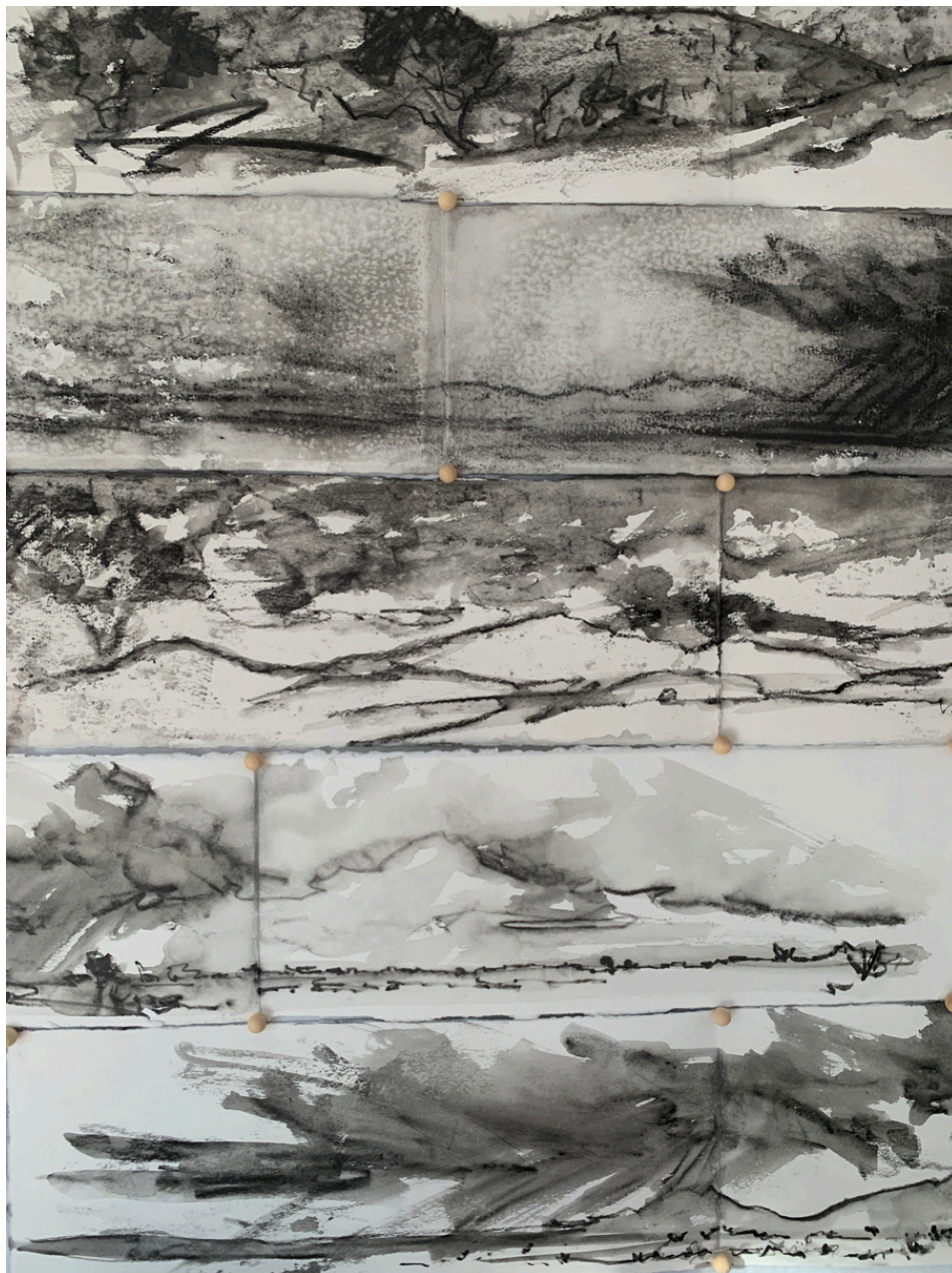


"float on..."

2026, oil on canvas, 90x60cm.

Unframed.

\$1800



“after a morning of watching steady rain falling on the Cheela Plains, the weather started to break enough that the clouds emerged from the grey drizzle and oh.. what clouds they were. To have beautiful clouds and light over the Pilbara - well happy + was my default yesterday... I stood on the lookout, through rain bursts and painted and drew and took a million photos, none of which will capture that light...”

Journal entry, 27th June.



“clouds for mountains No. 1, 2 3 4 and 5”
2026, oil on canvas.

Unframed

180x120cm each panel... The entire series measures 6m long x 180 high.

NB. Each panel can be purchased separately. \$4400 ea

To purchase two or more panels, these must be in order eg. 1 and 2.

For the purchase of the entire series prior to opening night, contact anita@anitaphillips.com.au



“clouds for mountains No. 1”
2026, oil on canvas. 180x120cm
Unframed \$4400



“clouds for mountains No. 2”
2026, oil on canvas. 180x120cm
Unframed \$4400



“clouds for mountains No. 3”
2026, oil on canvas. 180x120cm
Unframed \$4400



“clouds for mountains No. 4”
2026, oil on canvas. 180x120cm
Unframed \$4400



“clouds for mountains No. 5”
2026, oil on canvas. 180x120cm
Unframed \$4400



"a view to the west"
2026, oil on canvas, 120x120cm.
Unframed.
\$3800





"to see you once again"
2026, oil on canvas, 50x50cm.
Unframed
\$1600.



"the sky is gentle this morning after all the rain. Soft soft pinks and greys. Lots of water on the ground. So lucky to be here in this mud... breathe it in...
Journal entry, 28th June.

"softly, gently"
2026, oil and cold wax on panel,
60x60cm.
Framed
\$1800





*“There is a weight to this weather,
not an oppressive weight but a
seriousness about the way in which the
clouds roll in – like we are here to
do some serious weather...”*

*then the quiet and the rising and as I
paint and write and reflect, I think
perhaps this is about
more than weather.*

*When I am watching mothers and nurses
shot by masked men... perhaps this
about more than land and dirt and
clouds.. perhaps this about more than
weather..”*

Words written into this work, carved
into the wax surface – Jan 2026

“perhaps this is about more
than weather”

2026, oil and cold wax on panel,
120x120cm. Framed.

\$3800

"worn, weathered..."
2026, oil and cold wax on panel, 30x30cm.
Framed
\$850.





"drift"
2026, oil on jute canvas, 30x30cm.
Unframed
\$800



"a change in the air..."
2026, oil on jute canvas, 30x30cm.
Unframed
\$800



"weather turning"
2026, oil on jute canvas, 30x30cm.
Unframed
\$800



"a sky like this..."
2026, oil on jute canvas, 30x30cm.
Unframed.
\$800



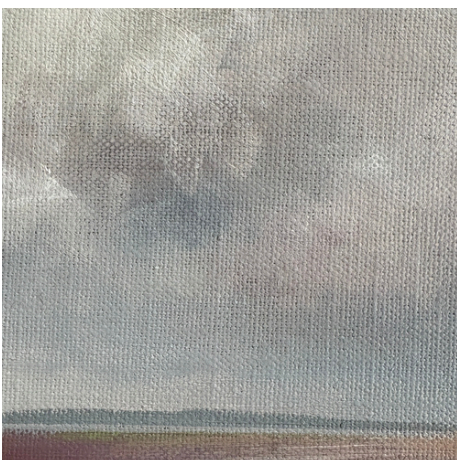
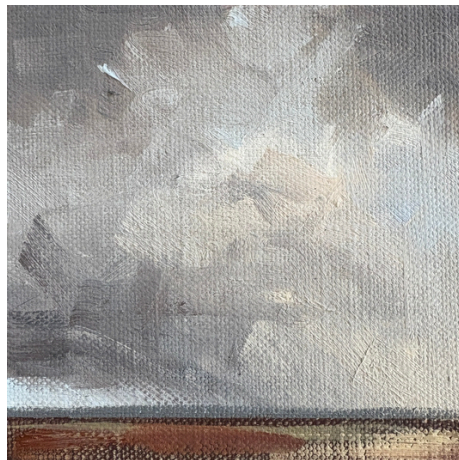
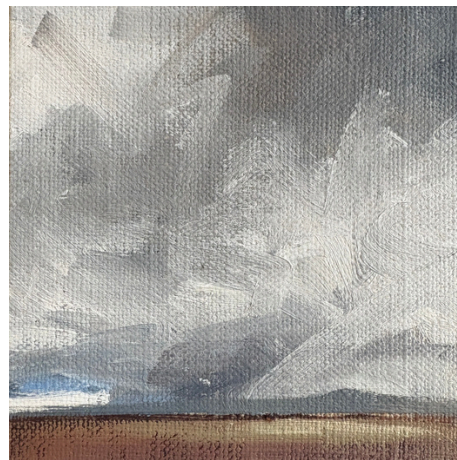
"where the light rests..."
2026, oil on jute canvas, 30x30cm.
Unframed.
\$800



"and then, the quiet..."
2026, oil on jute canvas, 30x30cm.
Unframed.
\$800



“The clouds were sensational – the colours of the Pilbara just glowed under the muted light...”
Journal entry, Wednesday, 26th June



"storm - studies"
2026, oil on linen panel each 10x10cm.
Framed - sold as a series of 10
\$2000





"the immensity of it all.."

2026, oil and cold wax on panel. Framed in dark oak shadow frame. 90x60cm.

\$2200



"its raining on the plains 1"
2026, oil and cold wax on panel. Framed in dark oak
shadow frame. 30x60cm.
\$950



"its raining on the plains 2"

2026, oil and cold wax on panel. Framed in dark oak shadow frame. 30x40cm.

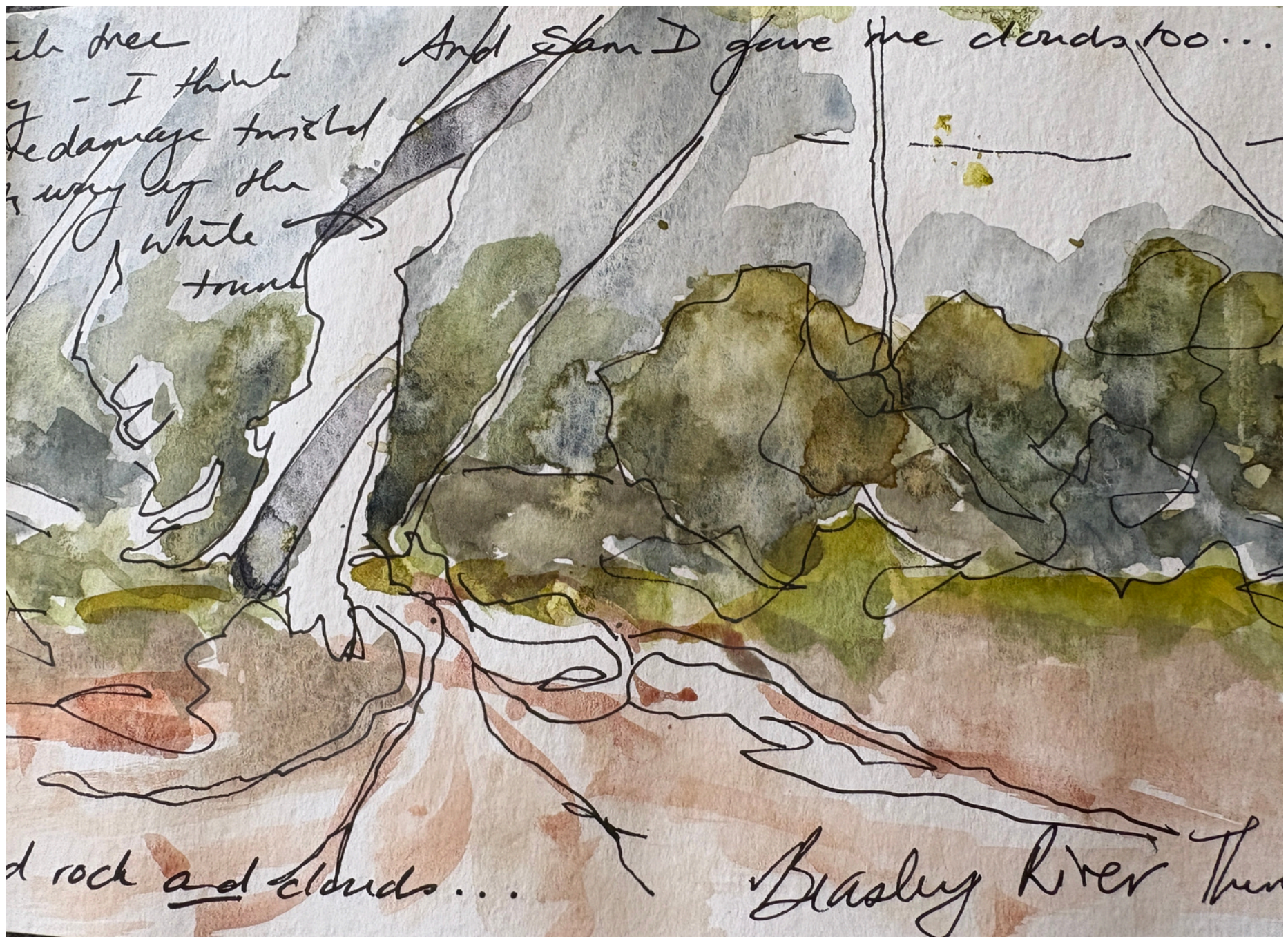
\$900

the tree
- I think
the damage twisted
in way of the
white
trunk

And Sam I gave the clouds too...

and rock and clouds...

Basley River Thur





*“We managed to leave camp despite many roads still
being closed.. we could get down to the Beasley
River... the river was not running, not enough
rain for that yet...”
Journal entry, 27th June*

“down to the river” (Left)
2026, oil and cold wax on panel. Framed in dark oak
shadow frame. 120x90cm.
\$3500

“Walking through the river bed, I could feel rather than hear, a gust of wind from behind me. I turned – and a flock of corellas swooped over my head and down the river. Before playfully parking themselves in various trees along the river. Like a platoon or squadron of planes they moved down the river...”

Journal entry, 27th June



“breath of wings” (above)

2026, oil and cold wax on panel. Framed in dark oak shadow frame. 50x50cm.

\$1800



"cathedral"
2026, oil and cold wax on panel. Framed in dark oak
shadow frame. 90x50cm.
\$2200



Detail of "cathedral"



“so what has this trip brought to me this time? I think I have learnt to relax into the experiencing of the landscape rather than focusing on the productivity aspect. Don’t worry on what paintings have been made – these will happen back in reflection and in the studio when I decide what I want to focus on. ... of course these clouds against the plains and ranges are definitely getting captured. What a gift to get these clouds – love! I usually sit and think about a goal for myself after these trips – nope, not this time! its all just as it should be, however it comes... that’s different for me...”

Journal entry – last day...



"5.30am... going to grab a cup of tea and head up to the lookout..."
Journal entry, 28th June.



and of course, clouds make me happy...”
Journal, Wednesday 26th June

Thanks to

The beautiful crew of Cheela Plains for making every visit special – I will be back for sure...

Guilhem Therond – Curator PS Artspace, Fremantle for all his thoughts and assistance, and the opportunity to place my clouds in this gorgeous space...

Angela Eastman for the beautiful framing and moral support along the way

Jean Michele for his help with hanging the exhibition – thanks so much!

My amazing fellow art travellers who were there in the storm with me – Carly Le Cerf, Sam Denison, Rachel Falls-Williams, Shanti Gelmi and Lauren Kennedy – strong talented women all... so much respect and inspiration and laughs and tears...legends x

and...

My beautiful little family – who put up with the ups and downs of this artistic journey – who listen when its a bad painting day and celebrate when its a good one.

Photography credits

Claire Mcferran @gathering.light.

Jessica Howard (Terra Chroma 2024) @bushjournal

Cheela Plains – big clouds at afternoon sunset time